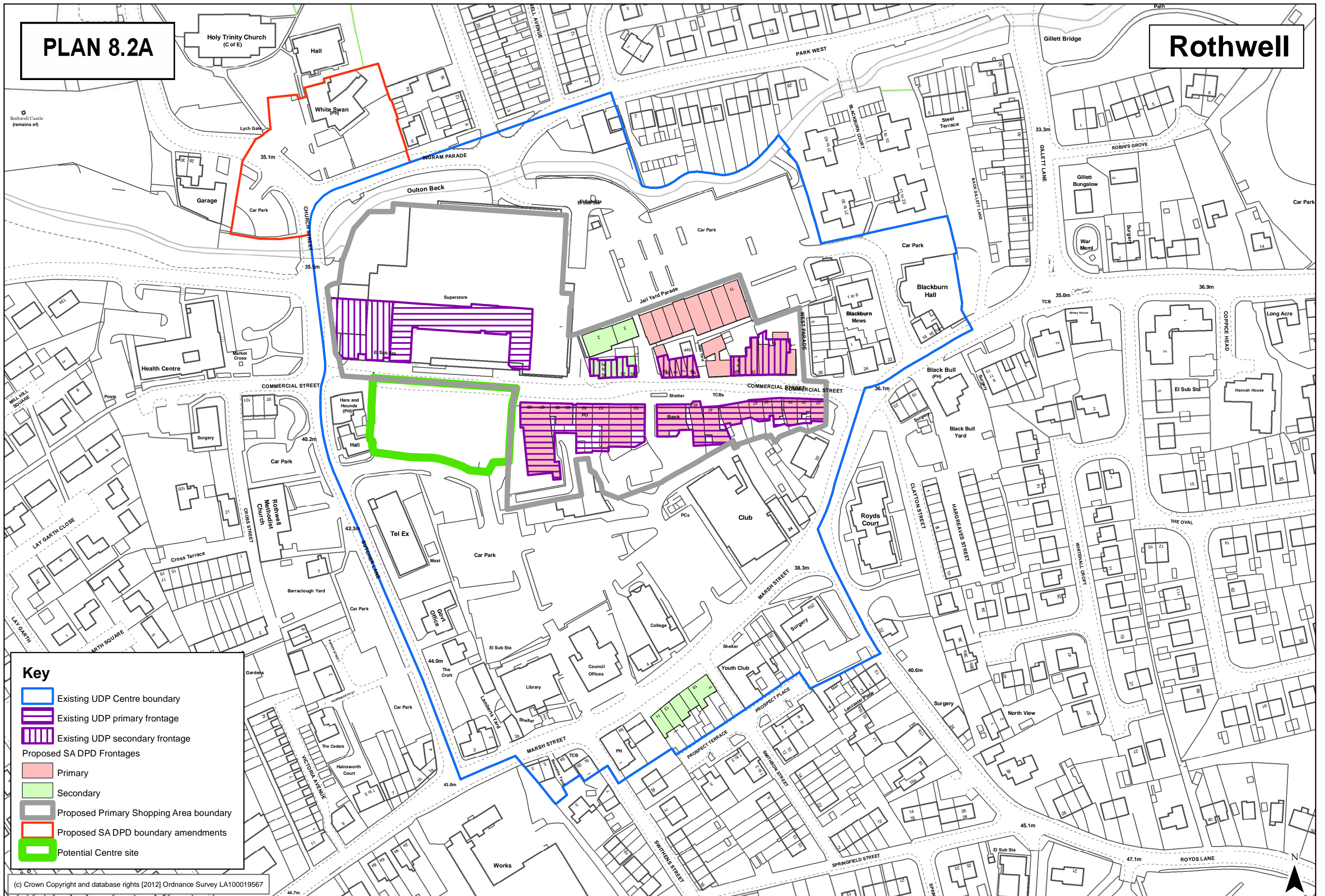


# PLAN 8.2A

# Rothwell

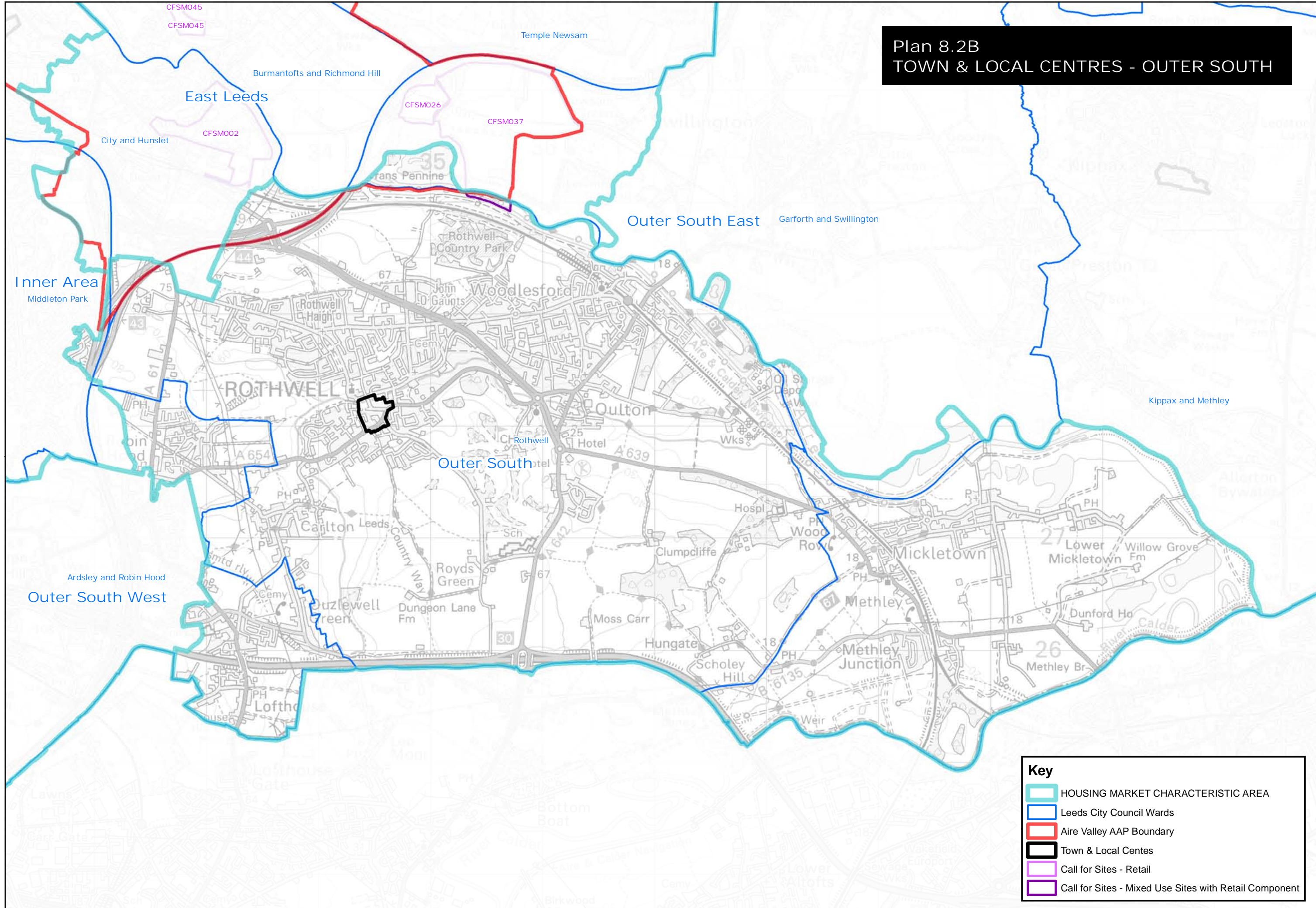


**Key**

- Existing UDP Centre boundary
- Existing UDP primary frontage
- Existing UDP secondary frontage
- Proposed SA DPD Frontages
  - Primary
  - Secondary
- Proposed Primary Shopping Area boundary
- Proposed SA DPD boundary amendments
- Potential Centre site

(c) Crown Copyright and database rights [2012] Ordnance Survey LA100019567

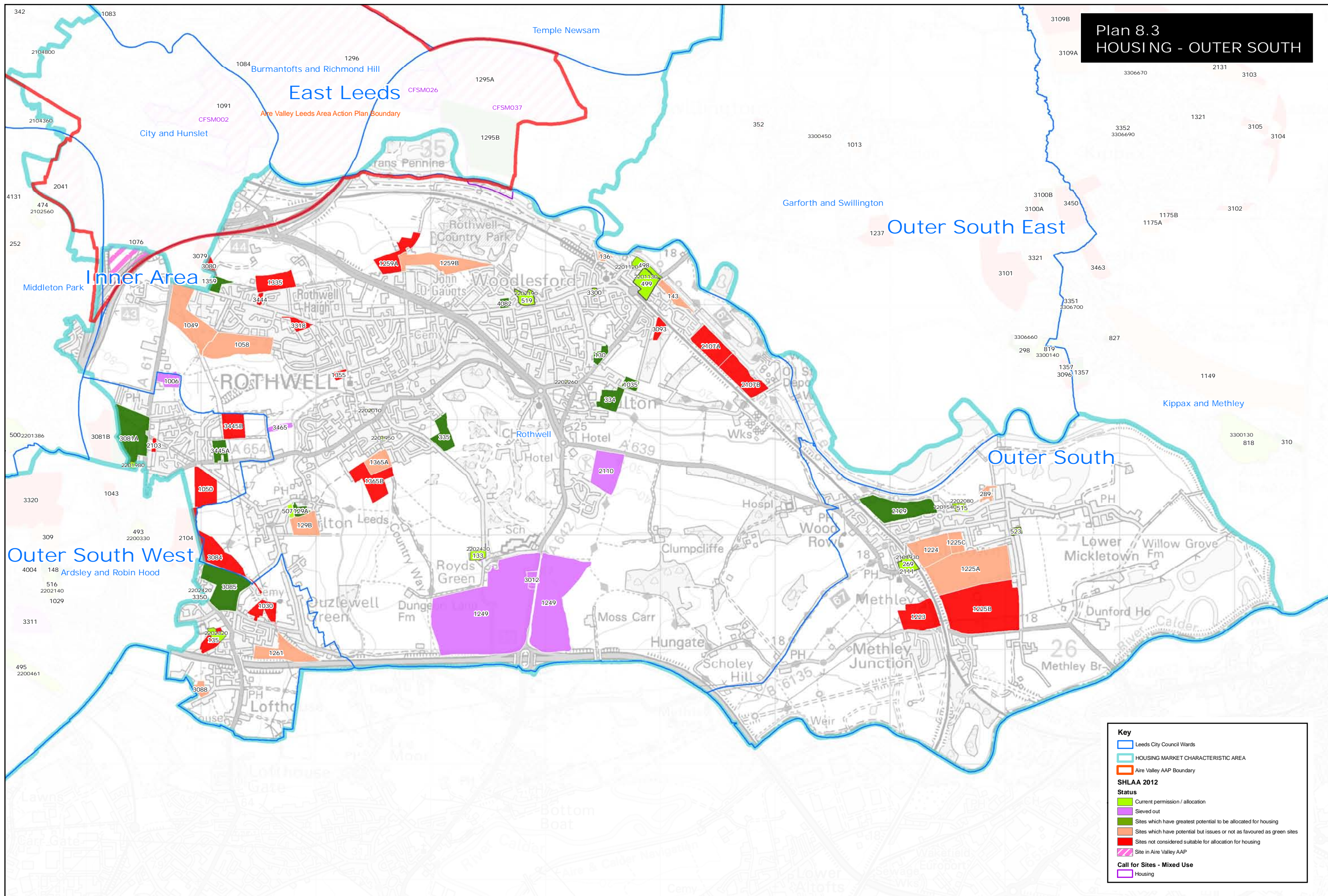
**Plan 8.2B  
TOWN & LOCAL CENTRES - OUTER SOUTH**



**Key**

- ▭ HOUSING MARKET CHARACTERISTIC AREA
- ▭ Leeds City Council Wards
- ▭ Aire Valley AAP Boundary
- Town & Local Centres
- Call for Sites - Retail
- Call for Sites - Mixed Use Sites with Retail Component

**Plan 8.3  
HOUSING - OUTER SOUTH**



**Key**

- Leeds City Council Wards
- HOUSING MARKET CHARACTERISTIC AREA
- Aire Valley AAP Boundary

**SHLAA 2012**

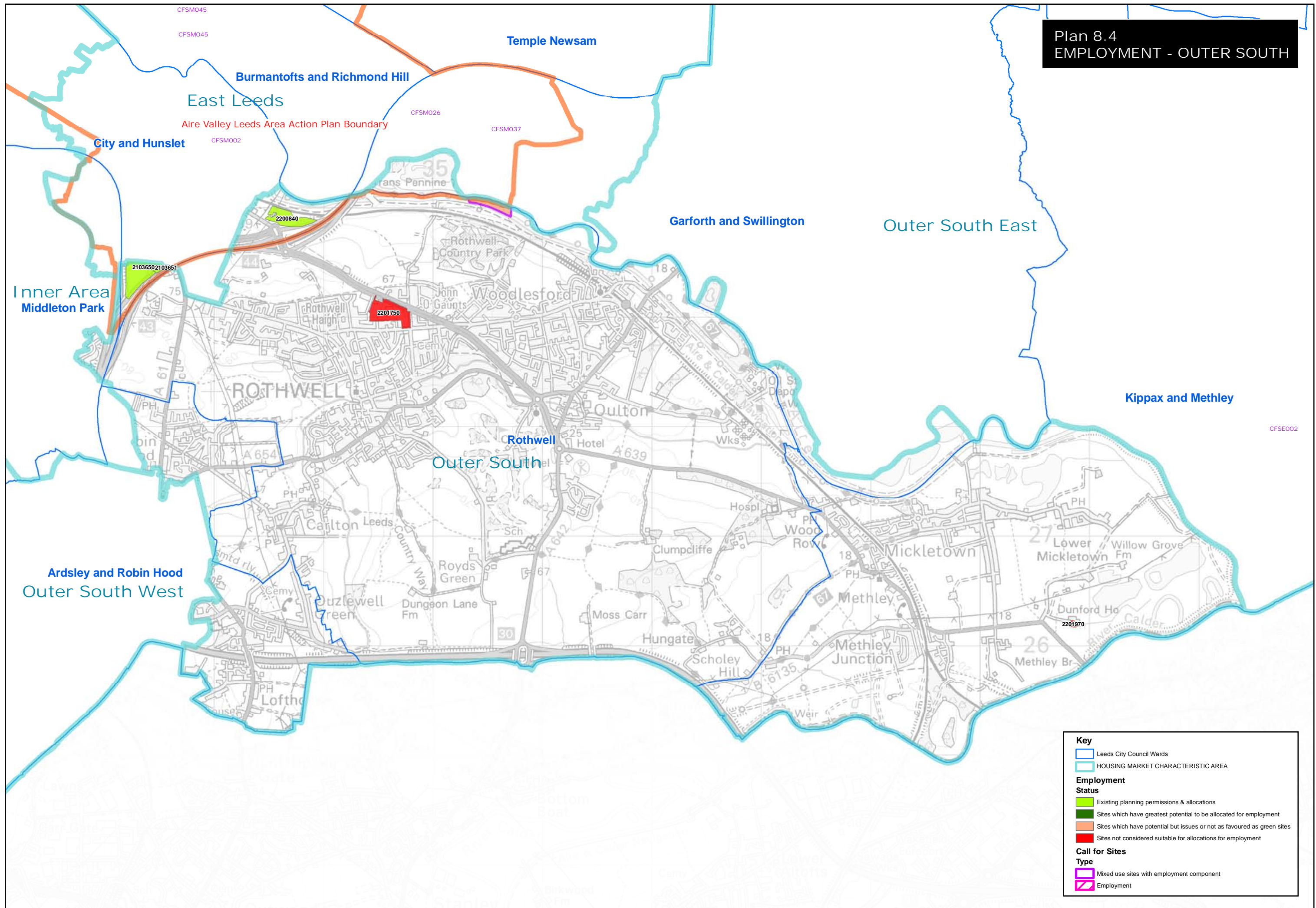
**Status**

- Current permission / allocation
- Sieved out
- Sites which have greatest potential to be allocated for housing
- Sites which have potential but issues or not as favoured as green sites
- Sites not considered suitable for allocation for housing
- Site in Aire Valley AAP

**Call for Sites - Mixed Use**

- Housing

**Plan 8.4  
EMPLOYMENT - OUTER SOUTH**



**Key**

- Leeds City Council Wards
- HOUSING MARKET CHARACTERISTIC AREA

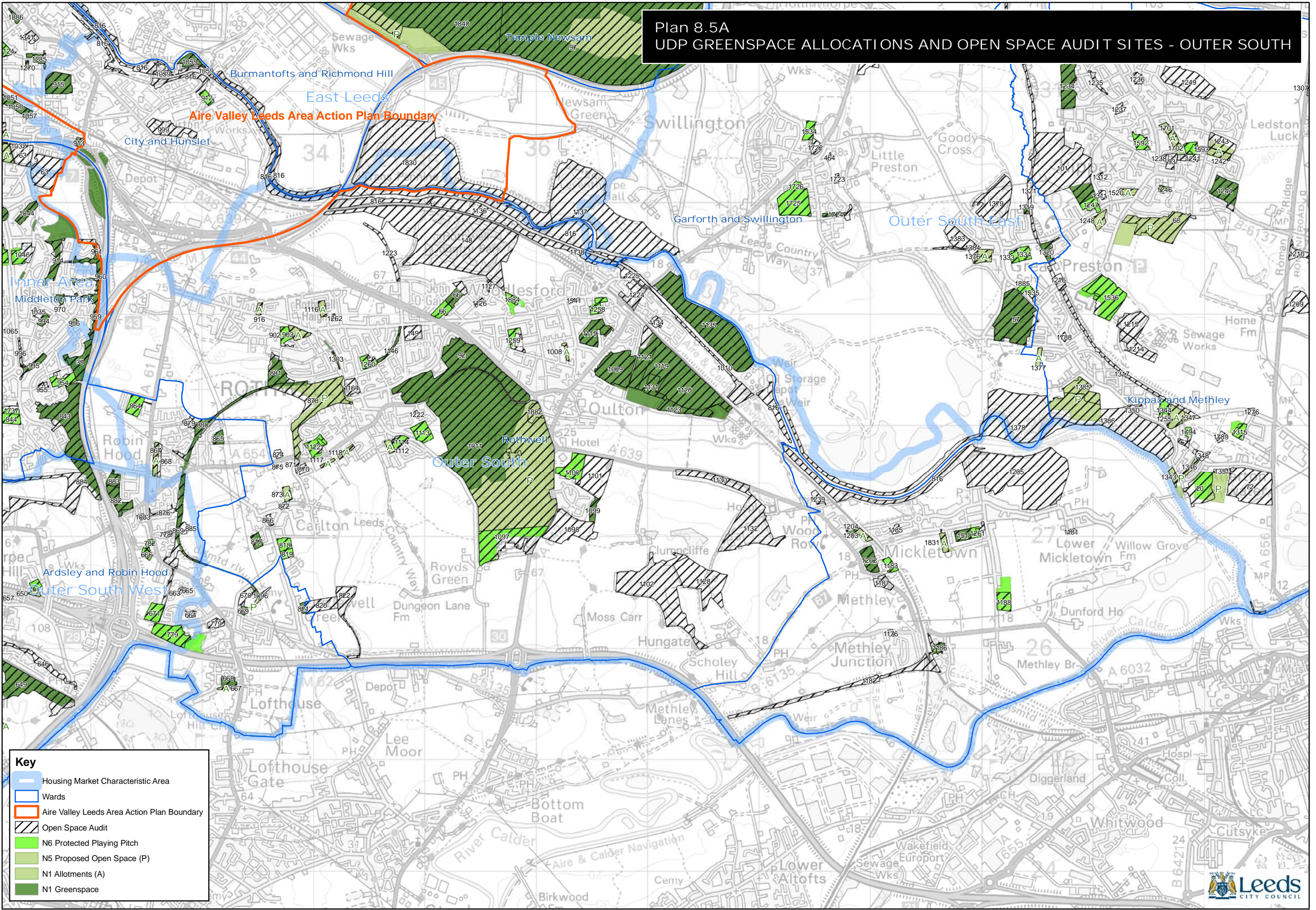
**Employment Status**

- Existing planning permissions & allocations
- Sites which have greatest potential to be allocated for employment
- Sites which have potential but issues or not as favoured as green sites
- Sites not considered suitable for allocations for employment

**Call for Sites Type**

- Mixed use sites with employment component
- Employment

**Plan 8.5A  
UDP GREENSPACE ALLOCATIONS AND OPEN SPACE AUDIT SITES - OUTER SOUTH**



**Key**

- Housing Market Characteristic Area
- Wards
- Aire Valley Leeds Area Action Plan Boundary
- Open Space Audit
- N6 Protected Playing Pitch
- N5 Proposed Open Space (P)
- N1 Allotments (A)
- N1 Greenspace



