

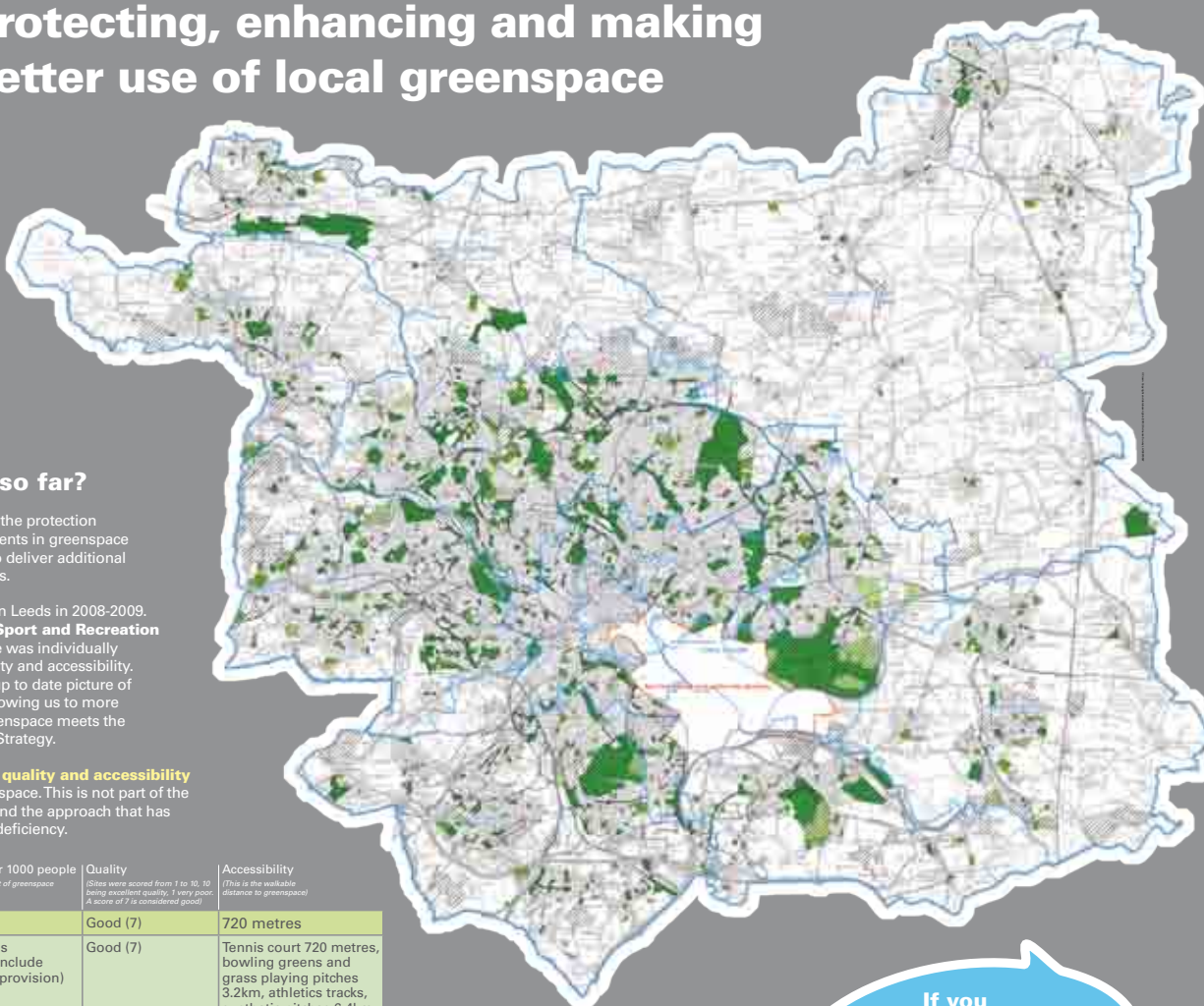
**Your city.
Your say.**

Greenspace

Protecting, enhancing and making better use of local greenspace

Site Allocations Plan Consultation
June/July 2013

Further information on the Open Space, Sport and Recreation Assessment (2008-12) is available at www.leeds.gov.uk/siteallocations



Greenspaces can range from playing fields to highly maintained environments to relatively natural landscapes. What all greenspaces have in common is the value they add to our local communities and to the city, helping to ensure that people can lead healthy lives and that nature and wildlife can thrive.

What are we seeking to do?

We need to decide which existing greenspaces should be **retained**, how they can be **improved** (if required) and how new areas can be provided in areas that are deficient in greenspace.

What has been done so far?

The Core Strategy includes policies for the protection of existing greenspaces and improvements in greenspace quality and accessibility. It also seeks to deliver additional open space when the opportunity arises.

The Council surveyed all open spaces in Leeds in 2008-2009. This study is called the **Open Space, Sport and Recreation Assessment (2008 - 2012)**. Each site was individually assessed in terms of its type, size, quality and accessibility. This information has given us a more up to date picture of what greenspace there is in the city, allowing us to more accurately assess whether existing greenspace meets the required standards set out in the Core Strategy.

The table below sets out the **quantity, quality and accessibility** standards for 7 different types of greenspace. This is not part of the consultation but will help you understand the approach that has been taken to define local greenspace deficiency.

Type of greenspace <small>(These are the 11 areas of Leeds that have distinct housing characteristics)</small>	Quantity per 1000 people <small>(This is the amount of greenspace by area)</small>	Quality <small>(Sites were scored from 1 to 10, 10 being excellent quality, 1 very poor. A score of 7 is considered good)</small>	Accessibility <small>(This is the walkable distance to greenspace)</small>
Parks and gardens	1 hectare	Good (7)	720 metres
Outdoor sports provision <small>(does not include education provision)</small>	1.2 hectares	Good (7)	Tennis court 720 metres, bowling greens and grass playing pitches 3.2km, athletics tracks, synthetic pitches 6.4km
Amenity greenspace	0.45 hectares	Good (7)	480 metres
Equipped play facilities for children and young people	2 facilities (per 1000 children/young people, 0-16 year olds) (excluding education provision)	Good (7)	720 metres
Allotments	0.24 hectares	Good (7)	960 metres
Natural greenspace	0.7 hectares main urban area and major settlements, 2 hectares other areas	Good (7)	720 metres and 2km from site of 20 hectares
City Centre open space (all types including civic space)	0.41 hectares	Good (7)	720 metres

What are we consulting you on?

There are four main aspects:

- Which greenspaces should be **protected**
- Which greenspaces could be used in a **different (or better)** way
- Which greenspaces you think could be **developed**
- Your suggestions for **new areas of greenspace**

If you are interested in commenting on any or all of these issues, please have a look at the maps located on the Greenspace table

Key

- Leeds City Council Wards
- Housing Market Characteristics Area
- Five Valley Leeds Area Action Plan Boundary
- Greenspace Sites
 - Open Space Audit
 - Liberty Development Plan - N1 Greenspace
 - Liberty Development Plan - N16 Protected Playing Pitch
 - Liberty Development Plan - N16 Proposed Open Space
 - Liberty Development Plan - N16 Allotments

Any UDP Greenspace sites that do not have an Open Space Audit (black hatch) overlay, are proposed for deletion (this includes sites that have been developed or below 0.2 hectares).

What does this mean?

Open Space, Sport and Recreation Assessment (2008-2012) (OSRY) Audit

This study surveyed all open spaces in Leeds and assessed their levels of play use, quality and accessibility, giving each site a score against each of the 11 measures. The study recommended strategically placed quantity, accessibility and quality of types of greenspace and from areas included in the Core Strategy. The study identified a range of sites across the city that would benefit from improvements in quality to increase their function and use.

Your city. Your say.

