



## Great day out for groups

Temple Newsam has everything to offer for a great value day out:

- reduced admission for pre-booked groups
- free coach parking for all pre-booked groups
- a range of tours to choose from
- tailored packages for each group depending on their needs
- refreshments can be booked in advance and private room hire available

All groups are advised to book in advance to ensure availability and group discounts.

## Looking for an event venue?

Temple Newsam has rooms to hire for meetings, conferences and corporate events. Its unique setting in one of Yorkshire's finest historical locations also provides a perfect location for special events including weddings, outdoor music, community and corporate events or film location. Please contact us for full details of our venue hire services.

**"The whole day was even better than we imagined it. It was wonderful getting married in such a beautiful setting."**



## Visitor information

### Opening times

British Summer Time	Greenwich Mean Time
<b>House</b> Tues – Sun, 10.30am – 5pm	<b>House</b> Tues – Sun, 10.30am – 4pm
<b>Farm</b> Tues – Sun, 10am – 5pm	<b>Farm</b> Tues – Sun, 10am – 4pm
<b>Tea Room</b> Mon – Fri, 10am – 4.30pm Sat – Sun, 10.30am – 5.30pm	<b>Tea Room</b> Tues – Sun, 10.30am – 4pm

House and Farm closed Mondays except Bank Holidays. Farm open Mondays during Summer, Easter, Spring Bank and October school holidays.

Last admission to the House and Farm 45 minutes before closing. Please check the website or telephone for details of the Christmas and New Year opening times.

### Admission

Admission charges do apply, please check our website or call us for up to date prices and discounts.

### Access

There is wheelchair access throughout the House. Mobility scooters are available for estate use, prior booking essential call 0113 264 5535. Accessible toilets and baby change facilities.

Dogs welcome to the park under strict control (only access dogs permitted in the farm, house or glasshouses)

### How to find us

**By Car:** 4 miles from Leeds City Centre, B6159 or 2 miles from M1, J46.

**By Bus:** On Sundays a direct bus 63a. During the week, 18 or 18a to Whitkirk and one mile level walk.

**By Train:** Leeds Train station (4 miles) frequent local connections to nearby Crossgates station. Taxis available at both stations.

Visit [www.wymetro.com](http://www.wymetro.com) for more info.

### Contact us

House 0113 264 7321, Estate and Farm 0113 264 5535  
Group Bookings 0113 264 7321

**Temple Newsam** Temple Newsam Rd, Halton, Leeds, LS15 0AE  
E: [temple.newsam@leeds.gov.uk](mailto:temple.newsam@leeds.gov.uk) [www.leeds.gov.uk/templenewsamhouse](http://www.leeds.gov.uk/templenewsamhouse)  
All information is correct at time of publication.

## Historic Mansion, Estate and working Farm



Temple Newsam  
Leeds

# A great value day out for everyone





## Things to do

There are many exhibitions and events which take place at Temple Newsam throughout the year. Here's a guide to some of the things on offer:

- beekeeping activities – various dates throughout the year
- bookworms story telling and reading club
- school holiday and weekend activities fun in the house and farm
- craft fairs, flower shows, a packed programme of theatre, music and dance events.

- free audio guides for adults and children
- hidden Temple Newsam Tours every Tuesday and Saturday at 11am
- introduction to the House tour every Thursday at 11am

For full details visit [www.leeds.gov.uk/templenewsamhouse](http://www.leeds.gov.uk/templenewsamhouse)



## The Farm

Pigs, sheep, goats, cattle and ducks are just some of the friendly farmyard animals you can visit at Home Farm which has some of the rarest cattle in the world.

As you explore the traditional buildings you may see a litter of piglets come into the world, take part in an activity, discover old crafts or just get to know the animals a little better.



## The House

This Tudor - Jacobean mansion is one of the most celebrated historic houses in the country. With over forty lovingly restored rooms open to view it is steeped in a rich history from its royal links to the lives of the ordinary people who worked and lived on the Estate.

Explore its outstanding fine and decorative art collections, many designated as of national importance. Marvel at the paintings, sculpture, ceramics, Chippendale furniture, silverware and fabulous interior design.

**“It was all absolutely wonderful, I can't believe I have never been to Temple Newsam before.”**



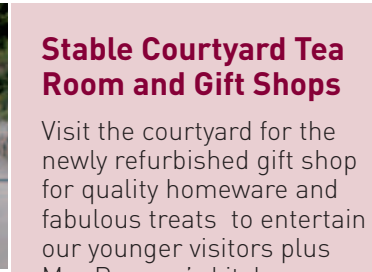
## The Park and Gardens

There are 1500 acres of stunning woodland, parkland and gardens waiting to be discovered. Landscaped by the famous 18th century gardener Capability Brown, there are miles of paths and trails to help you explore the woodlands and wilder side of the estate.

In the Georgian Walled Garden you will find fragrant roses, National Plant collections, stunning herbaceous borders and striking seasonal displays in the glass house, while the lakeside gardens offer a lovely relaxing place to play and picnic.

## Play golf

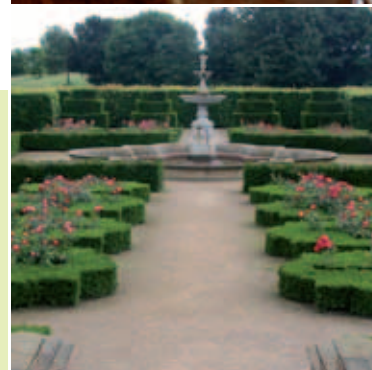
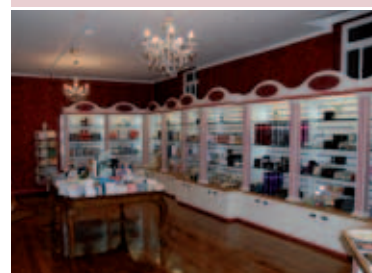
For the keen golfer there are two 18-hole pay and play courses, for more information or booking call 0113 2647362.



## Stable Courtyard Tea Room and Gift Shops

Visit the courtyard for the newly refurbished gift shop for quality homeware and fabulous treats to entertain our younger visitors plus Mrs Pawson's kitchen and garden shop stocks seasonal plants and locally sourced produce.

Enjoy a refreshing break in the Stable courtyard, the tea room offers delicious cakes, light snacks and hot food, most sourced locally, including sausages from Home Farm.



## New at Temple Newsam

- a newly refurbished larger gift shop with exclusive Temple Newsam gifts, homeware, kitchenware and garden products, as well as toys and games for children
- later in 2011 look out for an exciting new playground in the park designed exclusively for Temple Newsam with climbing equipment, a zip wire, swings, slides and more
- from the end of 2011 the newly restored Queen Anne State Bed on display
- a new interactive experience to life on the farm – could you milk a cow or live in a pigsty?