



Great day out for groups

Abbey House Museum and Kirkstall Abbey have everything for a great value day out:

- reduced admission for pre-booked groups
- free coach parking for all pre-booked groups
- a range of tours to choose from
- tailored packages for each group depending on their needs
- Gatehouse Café serving hot food, cakes and refreshments as well as picnic areas.

All groups are advised to book in advance to ensure availability and group discounts.



Looking for an event venue?

Abbey House and Kirkstall Abbey provide a unique venue to host an event, whether it is a meeting, corporate, large outdoor event or special occasion

Wedding blessings and vow renewals can be taken in the Abbey church and cloisters or museum street.

Please contact us for full details of our venue hire services.

Visitor information

Opening times

Kirkstall Abbey Visitor Centre

Winter 1st Oct- 31st March

Closed Mondays (Except bank holidays, 10am – 4pm)

Tue – Thurs: 11am – 3pm

Friday: closed **Sat & Sun:** 11am – 4pm

Summer 1st April – 31st Sept

Closed Mondays (Except bank holidays, 10am – 4pm)

Tue – Fri: 10am – 4pm **Sat & Sun:** 10am – 5pm

Abbey House Museum

Open all year round

Closed Mondays (Except bank holidays, 10am – 5pm)

Tue – Fri: 10am - 5pm **Sat:** 12pm - 5pm

Sun: 10am - 5pm Last admission 4pm

Admission

Kirkstall Abbey is free to visit. An admission charge does apply at Abbey House Museum, please check our website or call us for up to date prices and discounts.

How to find us

By Car: 2 ½ miles from Leeds City Centre on the A65 (Kirkstall Road). Free parking.

By Bus: Located directly on a well serviced bus route, 33, 33a and 757 travel from the city centre to Kirkstall Road. Visit www.metro.com for more information.

By Train: The nearest train station (Headingley) is ¼ mile walk from Abbey House museum.

Contact us

Abbey House Museum Abbey Walk, Leeds, LS5 3EH
E: abbey.house@leeds.gov.uk W: www.leeds.gov.uk/abbeyhouse
T: 0113 230 5492

Kirkstall Abbey Kirkstall Leeds, LS5 3EH
E: kirkstall.abbey@leeds.gov.uk W: www.leeds.gov.uk/kirkstallabbey
T: 0113 230 5492

All information is correct at time of publication.



Abbey House
Museum



Kirkstall
Abbey

A great value day out for everyone





The Park

The abbey and museum are set in wonderful parkland along the banks of the River Aire. Winner of the Green Flag award, the park has a walled herb garden, a riverside walk and a children's playground.

Kirkstall Abbey

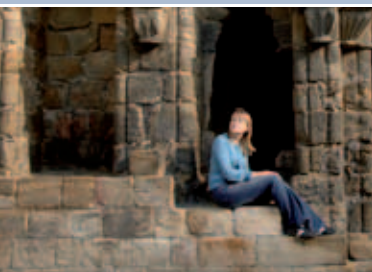
Enjoy a visit to Kirkstall Abbey, one of the most complete Cistercian monasteries in Britain. Founded in 1152 by Cistercian monks Kirkstall was a religious centre in Yorkshire until 1539 when it was closed by Henry VIII during the dissolution of the Monasteries.

Today the story of the abbey and its community is explored in the Visitor Centre.

Discover what life was like for a 12th century monk at Kirkstall Abbey through

- interactive displays
- reconstructions
- audio-visual displays.

Then wander amongst the ruins to discover where the monks lived, where they cooked and ate, prayed and slept, from the majesty of the church, to the peace of the cloisters.



“Kirkstall Abbey is absolutely wonderful, I can't believe I have never been before.”



Abbey House Museum

Once the Gatehouse to Kirkstall Abbey, Abbey House Museum now explores everyday life in the 19th century.

- discover how the Victorians used to live and get close to the sights and sounds of the past by exploring three enchanting streets of shops and houses set in 1880s Leeds
- explore the Childhood Galleries where you can meet Humpty Dumpty and crawl inside a giant boot
- marvel at doll's furniture made from conkers and wishbones in the Doll's House Gallery
- enjoy playing our Penny in the Slot Machines in the Penny Arcade
- The Exhibition Gallery unveils a new display every January – please see the website for this year's special exhibition.

“I left feeling happy and elated. Obviously brilliant for children. Loved the atmosphere at the Museum.”



Gift Shop

There are two gift shops to dip into, one in the museum for a range of gifts, books, souvenirs, old-fashioned sweets and seasonal offers; one in the abbey for guide books, souvenirs and outdoor games.

Both gift shops are filled with ideas, whether you want a original handmade souvenir or a small keepsake.

Things to do

There are many events and activities which take place at Abbey House and Kirkstall Abbey throughout the year including family events, themed events, talks and tours.

Please visit our website for full details of our events programme.

Gatehouse Restaurant

The restaurant at Abbey House Museum was originally the gatehouse of Kirkstall Abbey. With its grand Cistercian arches and Gothic style windows, it provides a unique backdrop for a quiet weekend lunch or a midweek afternoon coffee. Serving everything from cakes to local favourites, you're sure to find something for everyone.

The Gatehouse Restaurant is available for group bookings on 0113 2781233.

Buffets/picnics in the abbey ruins can be arranged on 0113 2305492.

