

Population Data

Mid Year Estimates of Population 2010

The Office for National Statistics (ONS) has now published the 2010 Mid Year Estimates of Population.

In 2001 Leeds had a population of 715,600. The population estimates for mid-2010 show that the population has increased to 798,800, an increase of 11.6% from the 2001 figure. This is more than the Yorkshire and Humber growth of 6.5% and England and Wales growth of 5.5% over the same period.

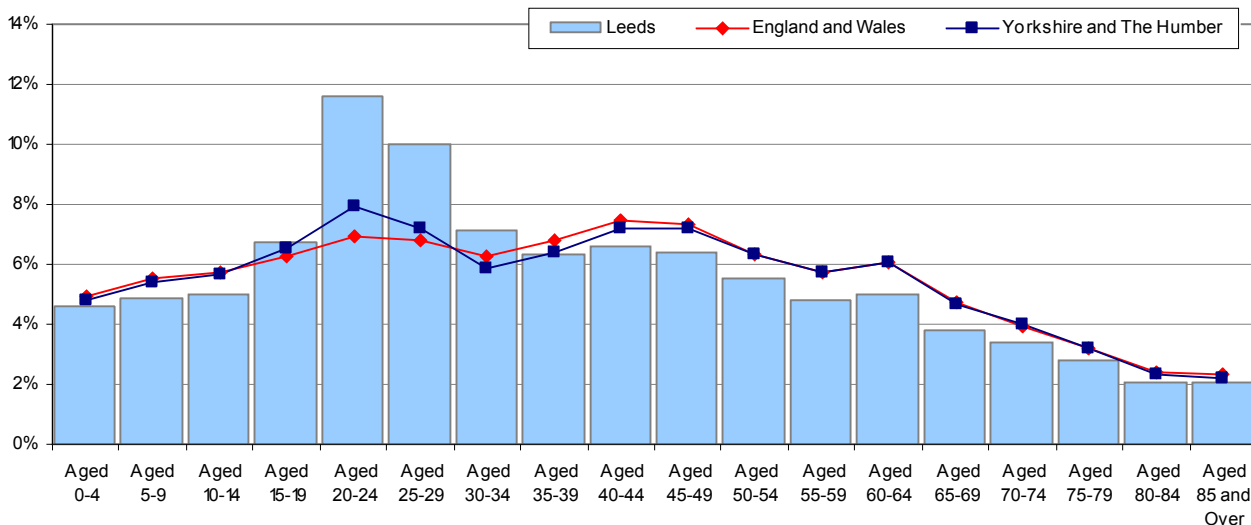
The table below provides a summary of the mid-2010 population structure by broad age bands and gender (numbers may not add up due to rounding).

2010 Mid-year population estimates for Leeds

Age band	Male	Female	All
0-4	24,000	22,900	46,900
5-14	40,500	38,500	79,000
15-19	26,800	27,100	53,900
20-29	87,000	85,500	172,500
30-59	147,100	146,700	293,900
60-74	46,600	50,800	97,400
75+	21,800	33,300	55,200
Total	393,900	404,900	798,800

Source: ONS Revised MYE of Population 2010

Comparison of age profile: Leeds / Yorkshire & Humber / England & Wales



The following table illustrates the change in the population of Leeds from 2001 to 2010. It shows that:

- The number of 0-4 year olds fell from 2001 to 2003 but has increased steadily since and has increased by 1,700 in the last year
- The numbers of 5-9 year olds fell steadily from 2001 to 2009 but has increased by 700 in the last year
- The number of 10-14 year olds has fallen steadily since 2001
- The number of 15-19 year olds rose steadily from 2001 to 2006 but has decreased each year since 2007
- However in stark contrast the 20-29 age band has shown a steady increase over the years with and overall increase, between 2001 and 2010 of 58%
- The numbers of 30-59 year olds showed the least change with an overall increase of just 4.4% since 2001

- The numbers of people aged 60-74 stayed fairly static through 2001 to 2006, however from 2006 onward the numbers have begun to increase
- The number of people aged 75+ has also increased steadily since 2001, with the numbers of very elderly (aged 85 and over) increasing by almost 20%

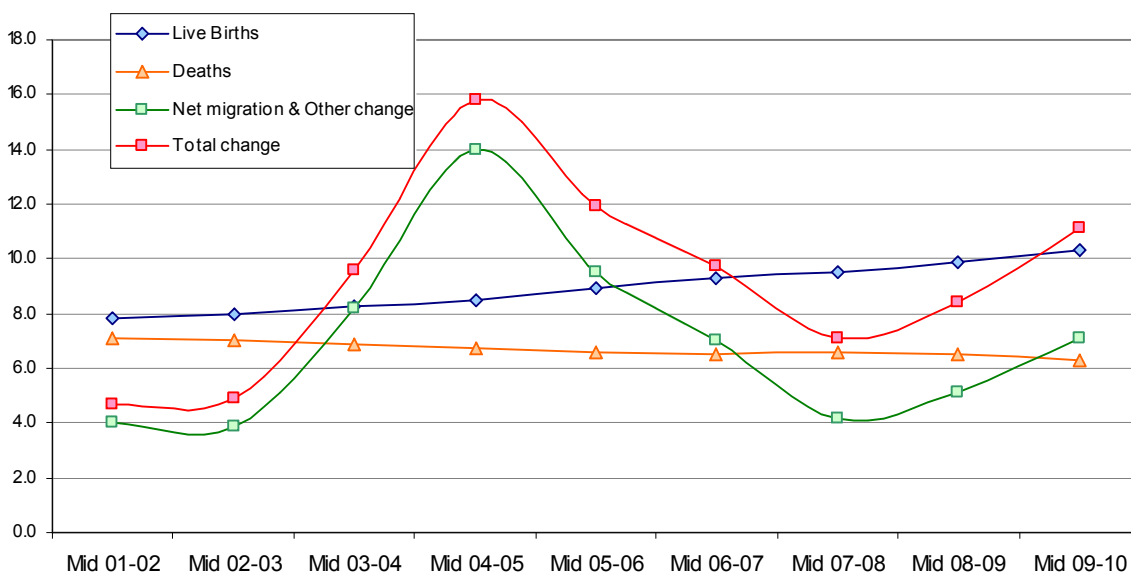
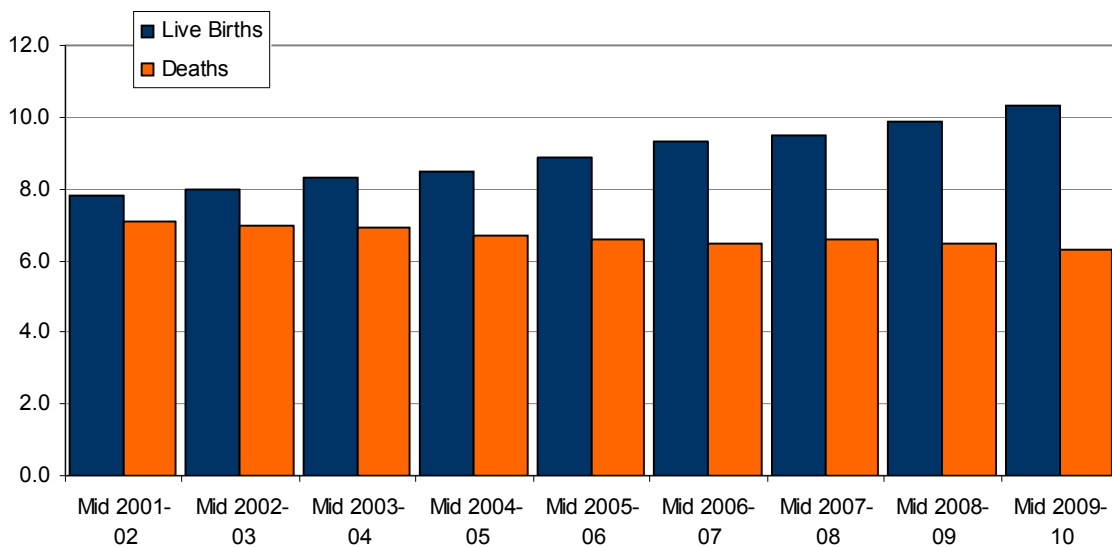
Leeds: Mid Year Population estimates 2001-2010

Year	All Ages	Aged 0-4	Aged 5-9	Aged 10-14	Aged 15-19	Aged 20-29	Aged 30-59	Aged 60-74	Aged 75+
2001	715.6	40.7	44.9	47.9	48.6	109.2	281.4	90.7	51.9
2002	720.3	39.6	43.7	47.7	50.9	113.1	283.1	90.0	52.1
2003	725.3	38.8	42.8	47.0	52.9	118.9	282.7	90.0	52.3
2004	734.8	38.9	42.0	46.0	54.4	127.7	283.4	90.0	52.5
2005	750.6	39.6	40.9	45.3	55.5	140.0	286.3	90.2	52.8
2006	762.5	40.6	39.5	44.2	56.7	149.6	287.9	90.6	53.4
2007	772.2	42.1	38.7	43.0	56.7	158.3	286.8	92.5	53.8
2008	779.3	43.7	38.2	42.1	55.6	164.6	286.6	94.6	54.2
2009	787.7	45.2	38.3	41.1	55.3	167.9	289.2	96.4	54.2
2010	798.8	46.9	39.0	40.0	53.9	172.5	293.9	97.4	55.2

Components of Change

The following series of tables and charts show the components of change and clearly show that while migration (both internal and international) continues to have the biggest impact on the population increase the increasing birth rate also continues to be a factor.

	Population (before change)	Live Births	Deaths	Natural change	Net migration & Other change	Total change	Population (after change)
Mid 2001-02	715.6	7.8	7.1	0.8	4.0	4.7	720.3
Mid 2002-03	720.3	8.0	7.0	1.0	3.9	4.9	725.3
Mid 2003-04	725.3	8.3	6.9	1.4	8.2	9.6	734.8
Mid 2004-05	734.8	8.5	6.7	1.8	14.0	15.8	750.6
Mid 2005-06	750.6	8.9	6.6	2.3	9.5	11.9	762.5
Mid 2006-07	762.5	9.3	6.5	2.7	7.0	9.7	772.2
Mid 2007-08	772.2	9.5	6.6	2.9	4.2	7.1	779.3
Mid 2008-09	779.3	9.9	6.5	3.4	5.1	8.4	787.7
Mid 2009-10	787.7	10.3	6.3	4.0	7.1	11.1	798.8



Alternate estimates of population

The figures produced by the Office for National Statistics represent the official view of the population across the United Kingdom.

Work undertaken by the University of Leeds suggests that the amount of international migration into the city has been overestimated. Researchers at the University Leeds have scrutinised the methods and data sources used by ONS to estimate international migration and has identified some discrepancies between the immigration estimates which underpin local authority mid-year estimates and evidence from local administrative datasets, specifically on immigration.

The estimates produced by the University suggest the population of Leeds to be around 766,000, almost 33,000 less than the ONS estimates for 2010.

Partnership working with both the University of Leeds and with the Health Service is providing a more accurate picture of the population of Leeds – this work is continuing in order to develop a shared view of population data that can be updated on a regular basis.