

Population Data

The Office for National Statistics (ONS) has recently released two sets of information relating to population and this report summarises the data from both releases:

- Revised Population Estimates 2002-2008
- Sub-National Population Projections 2008 – 2033

Population Revised Population Estimates 2002-2008

On the 13th May 2010 the Office for National Statistics (ONS) introduced a package of improvements to migration and population statistics. These improvements have included:

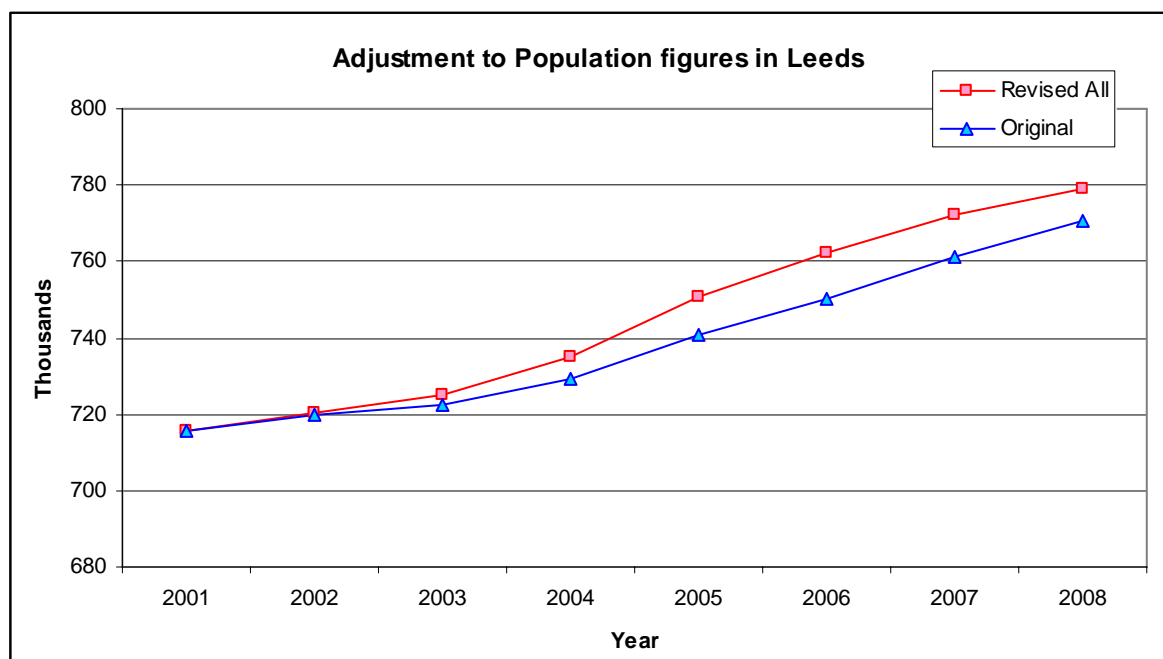
- New method for distributing migrants to Local Authorities incorporating modelling using up to date survey and administrative data replacing 2001 Census data where this is no longer a good indicator of migration
- Data from Higher Education Statistics Agency (HESA) has been used to improve estimates of internal migration by adjusting for student migration not caught by other administrative sources
- Short-term migration estimates for England and Wales and Local Authority level have been developed and published.
- A suite of migration indicators that bring together data from a range of sources, providing users with a quick view of different migration indicators at LA level
- Improved Port Survey to better estimate international in and out migration

As a result of these improvements, revised mid-2002 to mid-2008 local authority population estimates were made available.

The revised estimates now become the 'official' population estimates for the UK, replacing any earlier versions for the period mid-2002 to mid-2008

The total cumulative impact for Leeds is an upward revision of 8,500 to the mid-2008 population estimate. The following table shows the impact of the revisions on the population data from mid-2002 to mid-2008.

	Original	Revised	Divergence
2002	720,000	720,300	+ 300
2003	722,700	725,300	+ 2,600
2004	729,100	734,800	+ 5,700
2005	740,700	750,600	+ 9,900
2006	750,200	762,500	+ 12,300
2007	761,100	772,200	+ 11,100
2008	770,800	779,300	+ 8,500



Population 2008

In 2001 Leeds had a population of 715,600. The revised population estimates for mid-2008 show that the population has increased to 779,300, an increase of 8.9% from the 2001 figure. This is more than the Yorkshire and Humber growth 4.8% and England and Wales growth of 4.0% over the same period.

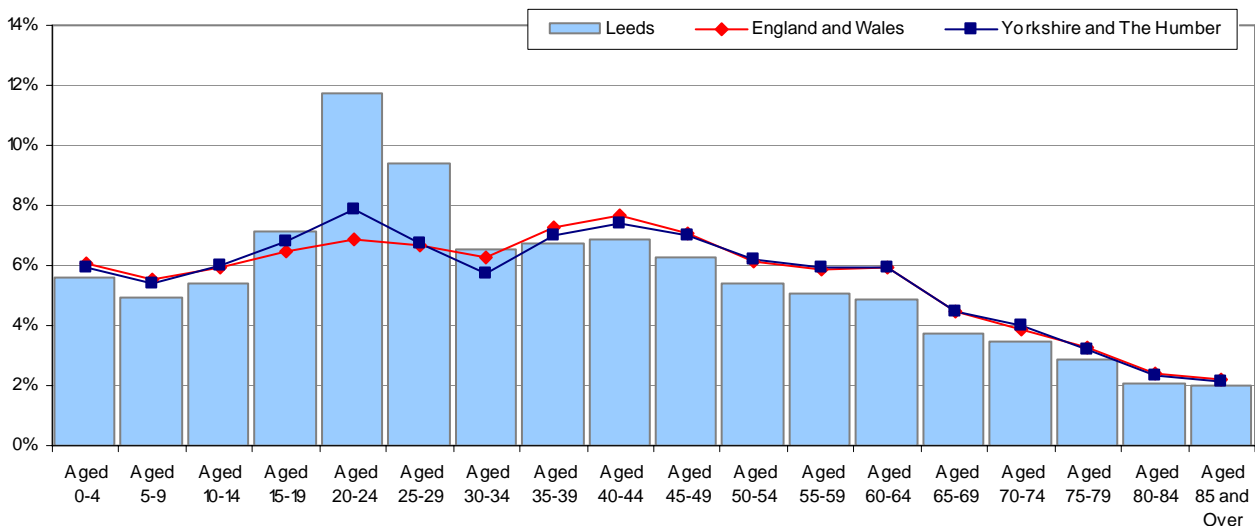
The table below provides a summary of the mid-2008 population structure by broad age bands and gender (numbers may not add up due to rounding).

2008 Mid-year population estimates for Leeds

Age band	Male	Female	All
0-4	22,300	21,300	43,700
5-14	41,200	39,100	80,300
15-19	28,000	27,600	55,600
20-29	83,600	81,000	164,600
30-59	142,500	144,100	286,600
60-74	45,300	49,400	94,600
75+	20,800	33,100	54,200
Total	383,600	395,600	779,300

Source: ONS Revised MYE of Population 2008

Comparison of age profile: Leeds / Yorkshire & Humber / England & Wales



The following table illustrates the change in the population of Leeds from 2001 to 2008. It shows that:

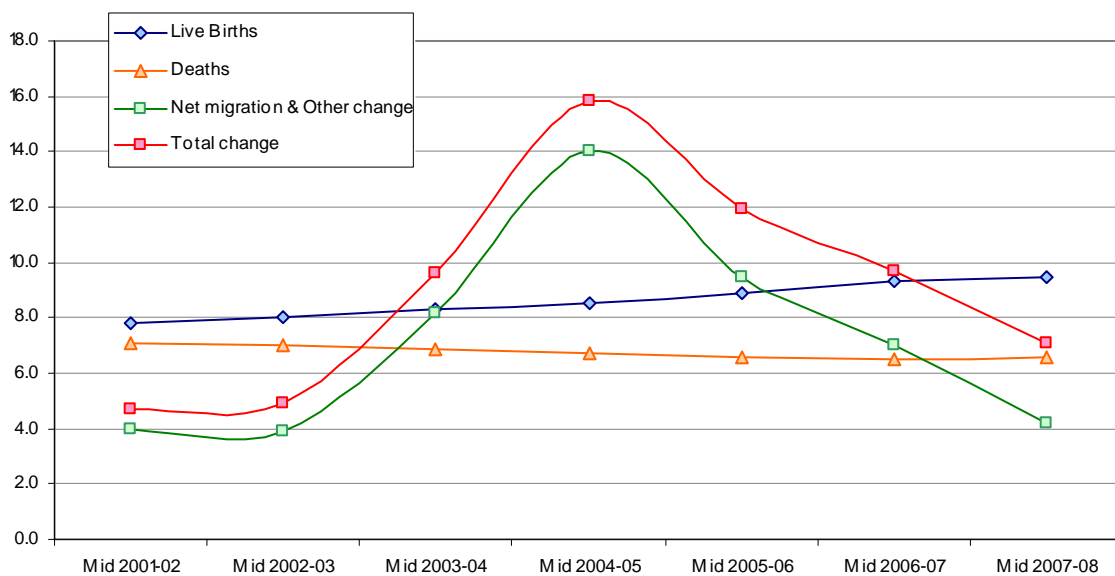
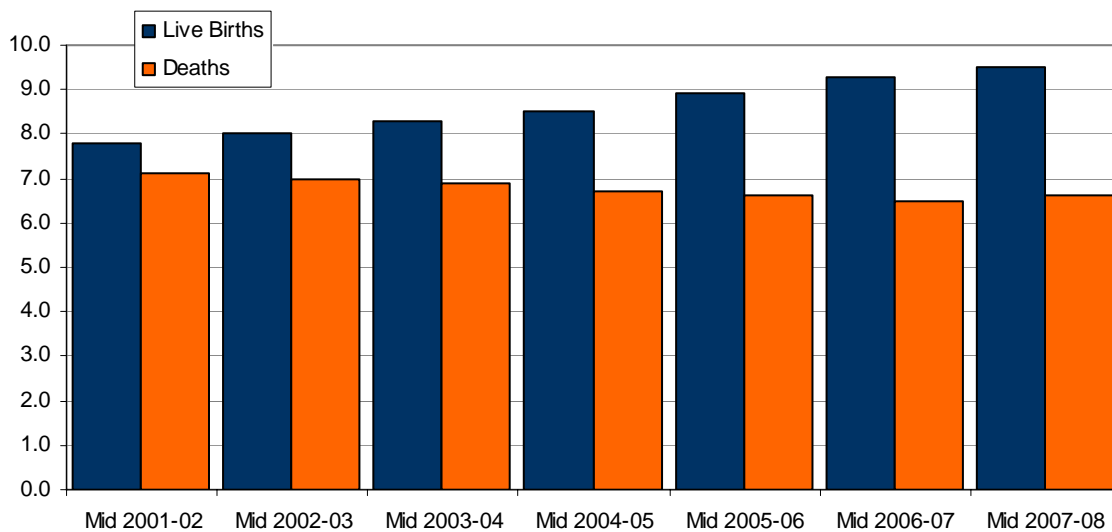
- The numbers of 0-4 year olds fell from 2001 to 2003 but have increased steadily since
- The numbers of 5-9 year olds and 10-14 year olds have fallen steadily since 2001 with an overall drop, over the 7 years of 14.9% and 12.9% respectively
- However in stark contrast the 20-29 age band has shown a steady increase over the years with and overall increase, between 2001 and 2008 of, 50%
- The numbers of 30-59 year olds showed the least change, with decreases in 2003, 2007 and 2009, and increases in the other years to finally rest at an overall increase of just 1.8%
- The numbers of people age 60 and above stayed fairly static through 2001 to 2005, however from 2006 onward the numbers have begun to increase.

Year	All Ages	Aged 0-4	Aged 5-9	Aged 10-14	Aged 15-19	Aged 20-29	Aged 30-59	Aged 60-74	Aged 75+
2001	715.6	40.7	44.9	47.9	48.6	109.2	281.4	90.7	51.9
2002	720.3	39.6	43.7	47.7	50.9	113.1	283.1	90.0	52.1
2003	725.3	38.8	42.8	47.0	52.9	118.9	282.7	90.0	52.3
2004	734.8	38.9	42.0	46.0	54.4	127.7	283.4	90.0	52.5
2005	750.6	39.6	40.9	45.3	55.5	140.0	286.3	90.2	52.8
2006	762.5	40.6	39.5	44.2	56.7	149.6	287.9	90.6	53.4
2007	772.2	42.1	38.7	43.0	56.7	158.3	286.8	92.5	53.8
2008	779.3	43.7	38.2	42.1	55.6	164.6	286.6	94.6	54.2

Components of Change

The following series of tables and charts show the components of change and clearly show that migration has had the biggest impact on the population increase.

	Population (before change)	Live Births	Deaths	Natural change	Net migration & Other change	Total change	Population (after change)
Mid 2001-02	715.6	7.8	7.1	0.8	4.0	4.7	720.3
Mid 2002-03	720.3	8.0	7.0	1.0	3.9	4.9	725.3
Mid 2003-04	725.3	8.3	6.9	1.4	8.2	9.6	734.8
Mid 2004-05	734.8	8.5	6.7	1.8	14.0	15.8	750.6
Mid 2005-06	750.6	8.9	6.6	2.3	9.5	11.9	762.5
Mid 2006-07	762.5	9.3	6.5	2.7	7.0	9.7	772.2
Mid 2007-08	772.2	9.5	6.6	2.9	4.2	7.1	779.3



Sub-National Population Projections 2008-2033

Sub-national population projections are currently produced every two years, and the latest 2008-based projections were released on 27th May 2010. The projections cover a 25 year horizon from 2008 to 2033, but it should be noted that there is a greater degree of uncertainty the further ahead the projection is made.

The sub-national population projections are based on the assumption that recent trends in fertility, mortality and migration at local authority level will continue; they take no account of local development policy, economic factors or the capacity of areas to accommodate population. The projections provide the population levels and age structure that would result if the assumptions about future fertility, mortality and migration levels were realised.

The projections cover a 25 year horizon from 2008 to 2033, but it should be noted that there is a greater degree of uncertainty the further ahead the projection is made and therefore analysis has been provided to show the population projections for the next 10 years (to 2018) and the next 25 years (to 2033).

These latest projections indicate that the population in Leeds will increase by:

- 12.8% in the decade to 2018, compared to a regional increase of 8.5% and a national increase of 7.4%, and
- 29% from 779,300 in 2008 to just over 1 million by 2033 (compared to a regional increase of 20.7% and a national increase of 18.0%)

Summary of projected changes in population distribution from 2008 to 2018 by broad age band (thousands)

Leeds	2008	2018	Increase	% change
0-4	43.7	53.5	9.8	22.4
5-9	38.2	48.3	10.1	26.4
10-14	42.1	42.5	0.4	1.0
15-19	55.6	47.2	-8.4	-15.1
20-29	164.6	185.5	20.9	12.7
30-49	205.4	242.9	37.5	18.3
50-64	119.3	132.1	12.8	10.7
65-74	56.5	65.1	8.6	15.2
75+	54.2	61.7	7.5	13.8
All ages	779.3	878.7	99.4	12.8
Y&H All ages	5,217.5	5,662.4	444.9	8.5
England All ages	51,464.6	55,252.2	3,787.6	7.4

Summary of projected changes in population distribution from 2008 to 2033 by broad age band (thousands)

Leeds	2008	2033	Increase	% change
0-4	43.7	55.6	11.9	27.2
5-9	38.2	53.9	15.7	41.1
10-14	42.1	52.8	10.7	25.4
15-19	55.6	60.2	4.6	8.3
20-29	164.6	188.5	23.9	14.5
30-49	205.4	293.3	87.8	42.7
50-64	119.3	141.5	22.2	18.6
65-74	56.5	77.3	20.8	36.8
75+	54.2	84.2	30.0	55.4
All ages	779.3	1007.0	227.7	29.2
Y&H All ages	5,217.5	6,296.0	1,078.5	20.7
England All ages	51,464.6	60,715.2	9,250.6	18.0

(N.B. numbers in the tables may not add up due to rounding).

Leeds Population Projections 2008, 2018 and 2033

