



Forecasting the Demand for Home Care in Leeds

Chris Dunne
Older People's
Commissioning Team



How is it done?

1. Analysing current HC provision
2. Overlaying demographic changes
3. Predicting future need



And it's a two way street.....

- We need to know this for our future planning to ensure people get the care they need
- You need to know it to plan your business, ensure you have the resources in place to maximise turnover and profit
- We need to pool info for the full picture
- YOU have much of that information

One thing you can be sure of

There will be no shortage of demand

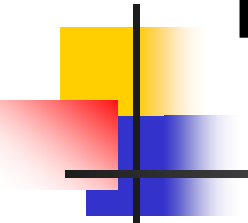


PLENTY of work to go around and
room for growth in the market



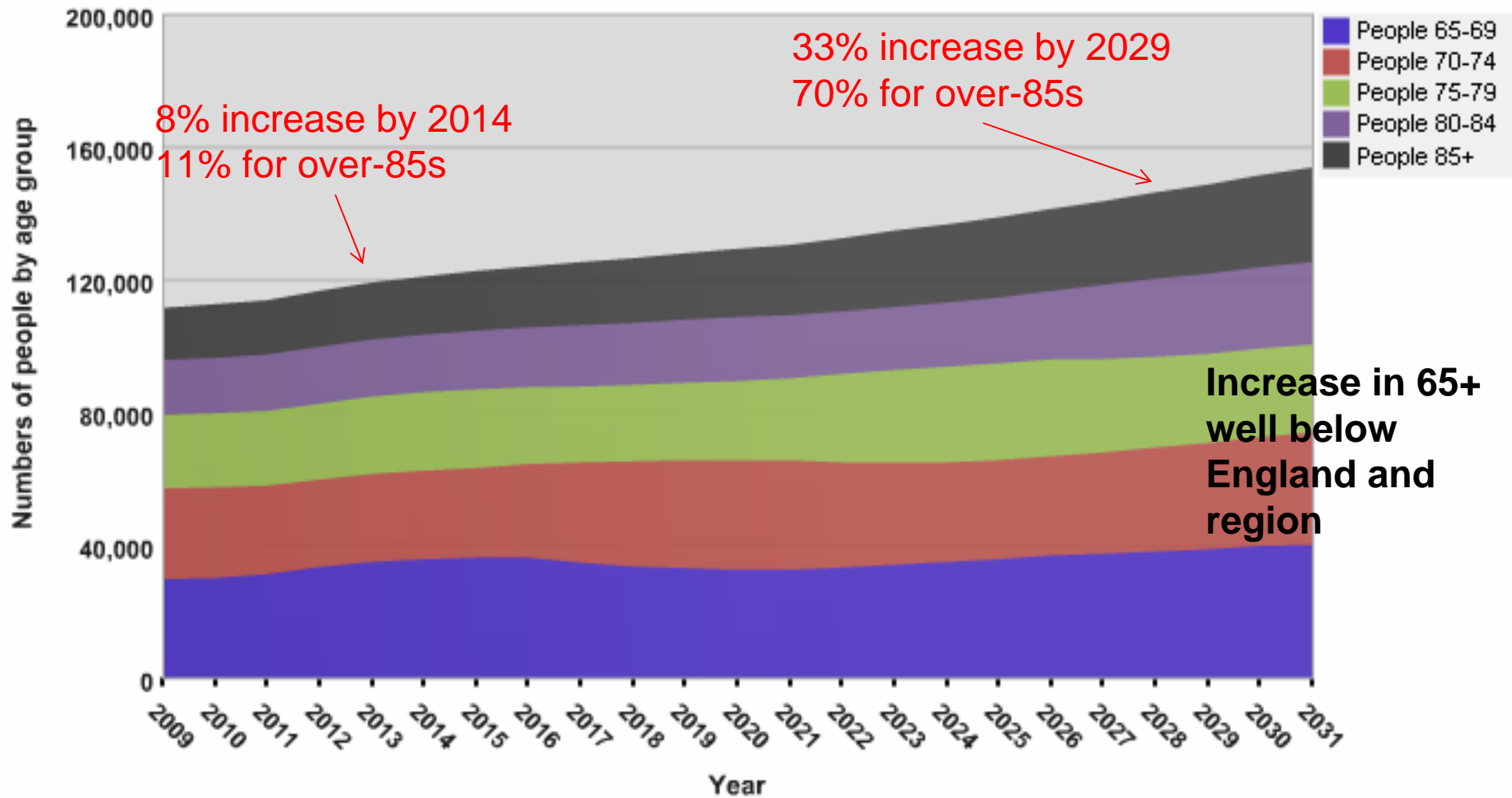
1. Demographic changes

% Expected Population Increases by 2029 in Leeds

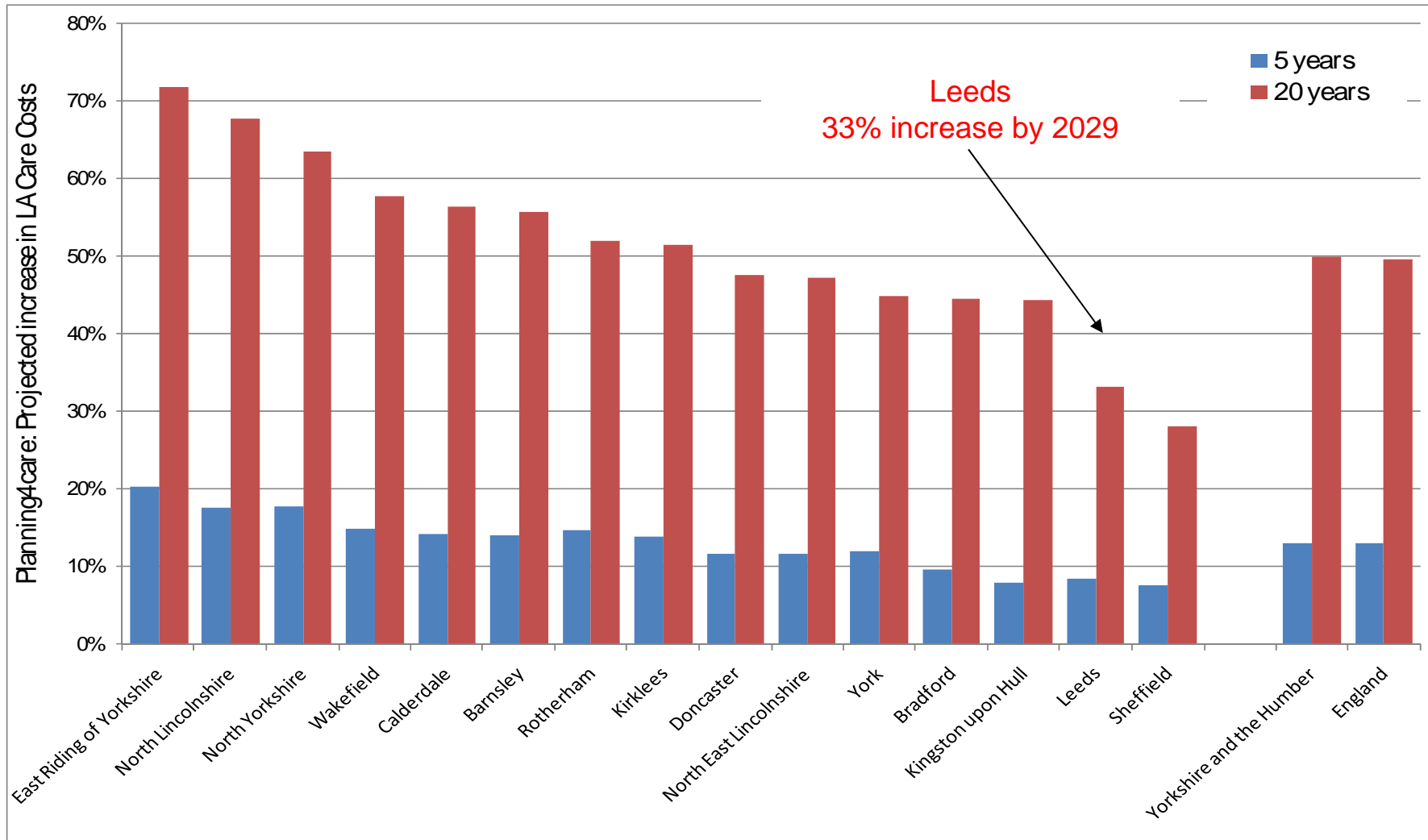


Total Children under 20	19.20%
Total Adults 20 to 64	16.90%
Total all older people >65	24.80%
Total Population All Ages	18.60%
OLDER PEOPLE	
Total 65 to 74	19.40%
Total Older People 75 to 84	23.90%
Total Older People over 85	41.00%
Total all older people >65	24.80%

Projected Increase in Leeds >65 population

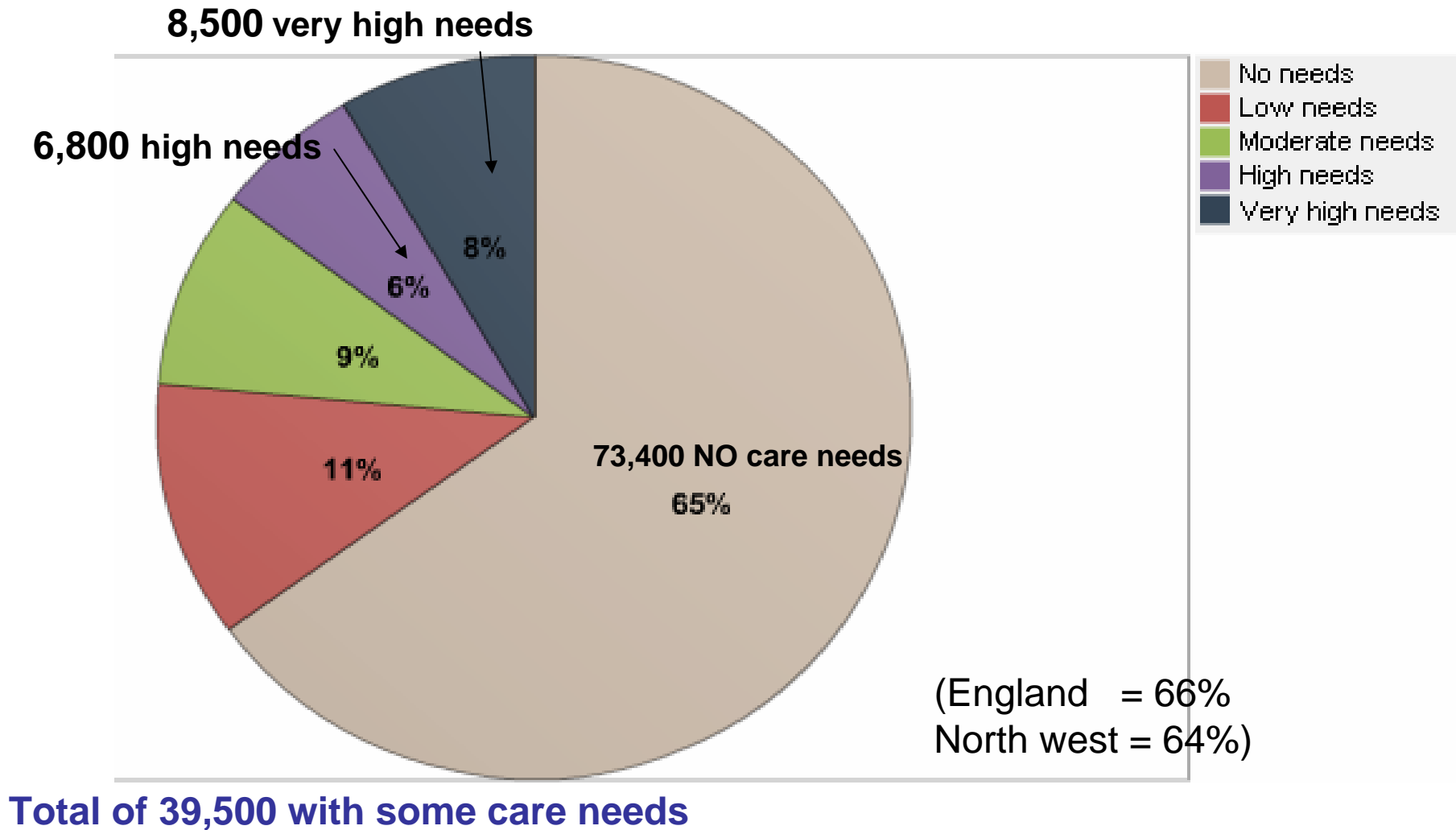


How do councils compare – 65+ growth



Older people by level of social care need

Total number OP in Leeds – 112,900





Other demographic trends

Other increases (harder to quantify but increasingly significant) in the numbers of

both children and adults with high level and very long-term complex care needs

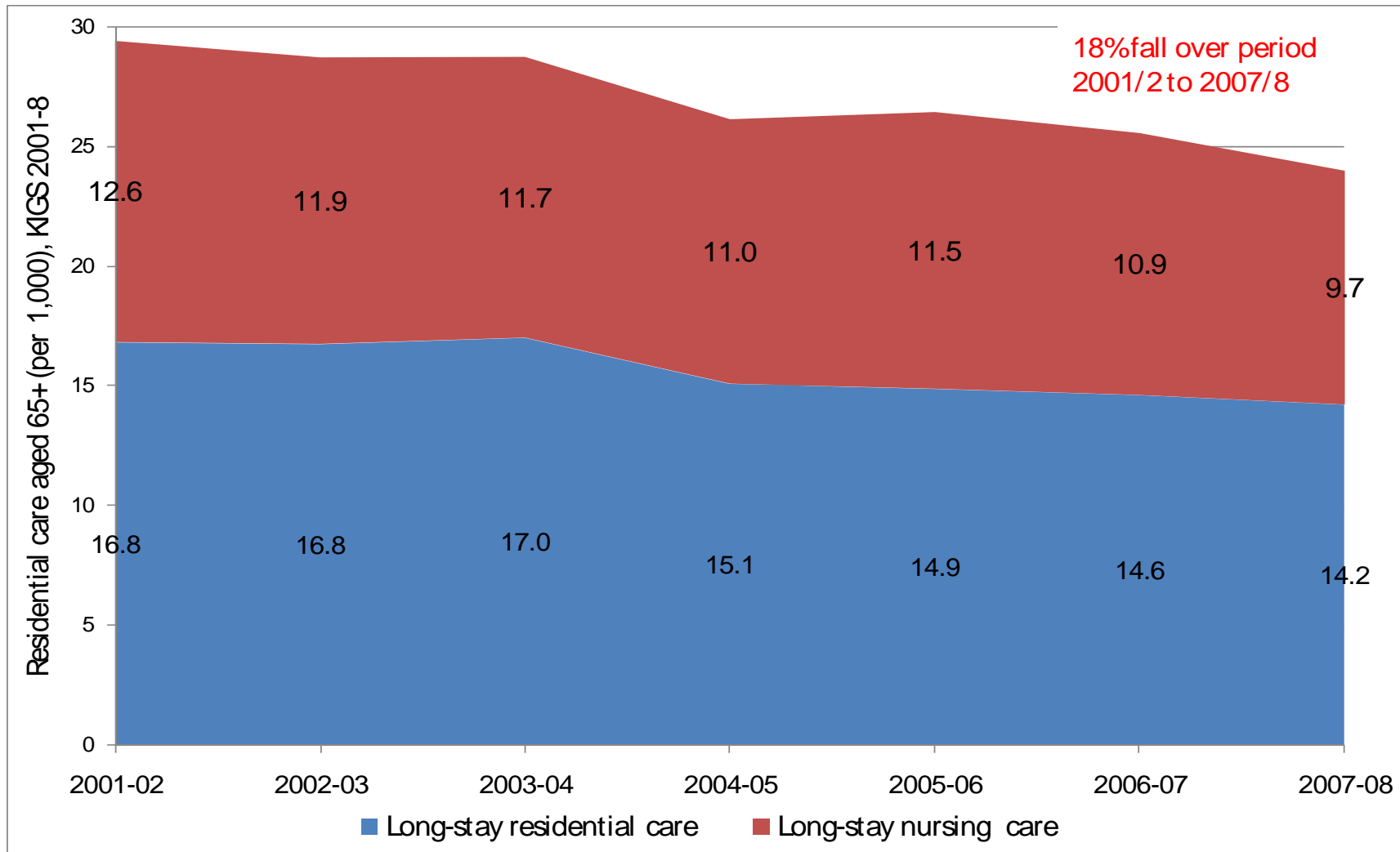
Increase in BME population

High level of higher level needs

Area	New ISAs	% ISA's requiring 7 day cover
East	145	86%
N/East	128	90%
N/West	154	81%
South	168	83%
West	74	81%
Citywide	669	84%

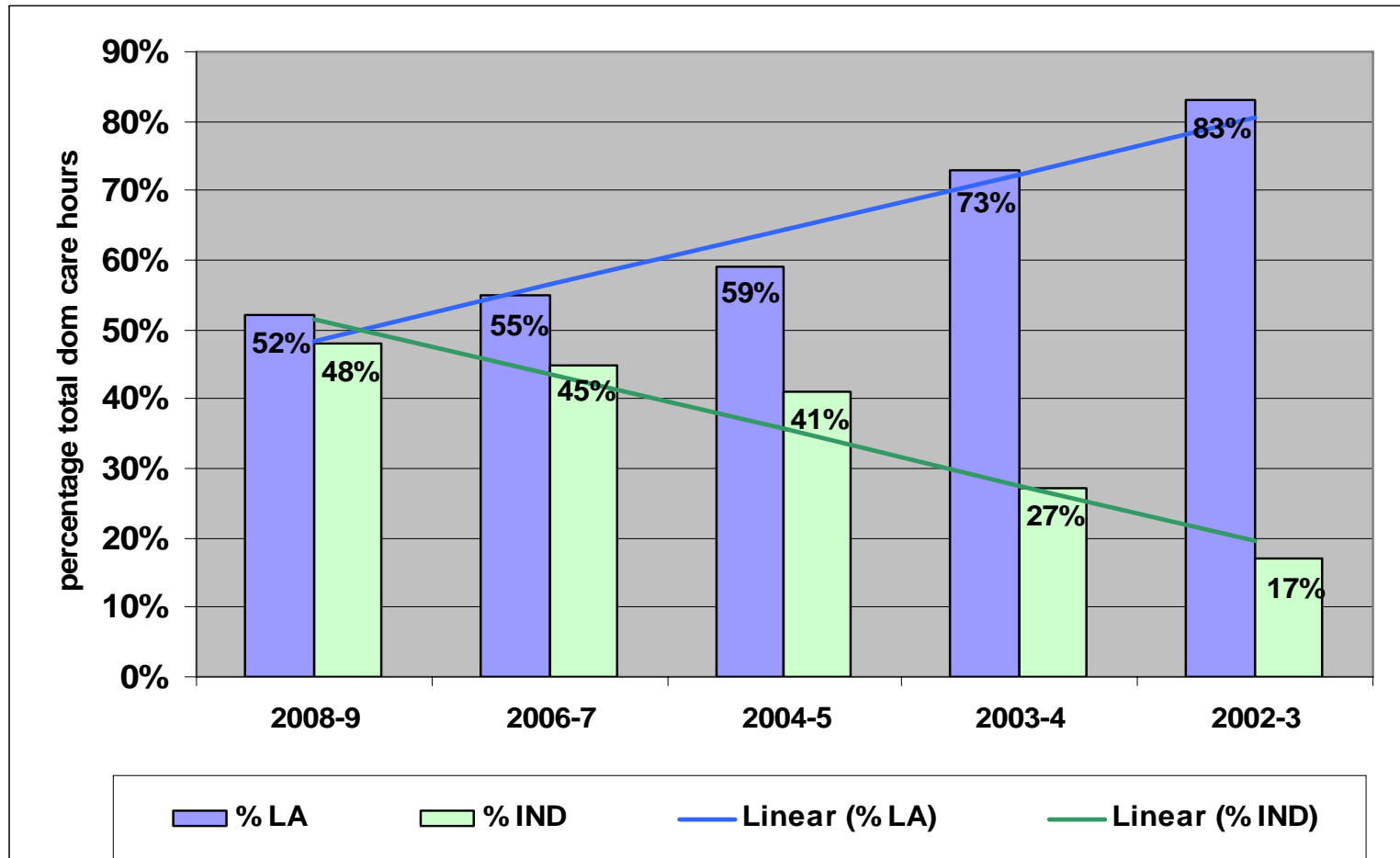
Latest Quarter - Apr – Jun 09

But ... service trends are going the other way



LA : Independent Provider Split

Increasing proportion of ALL domiciliary hours to Independent Providers





Developing Reablement and Preventative Services

- LA direct service provision will
 - a) specialise in delivering a 6-8wk reablement programme to all new ISA's.
 - b) support older people with dementia
 - c) support people with continuing care needs
- Clients requiring longer term support will be transferred to the independent sector providers



2. Current Provision

IRO :-

- > ASC commissions approx 30,000 hours/week "trad" dom care
- > From both LA and Ind providers
- > 40,000 hours if include *all* types of dom care

2008 Detailed Provider Split

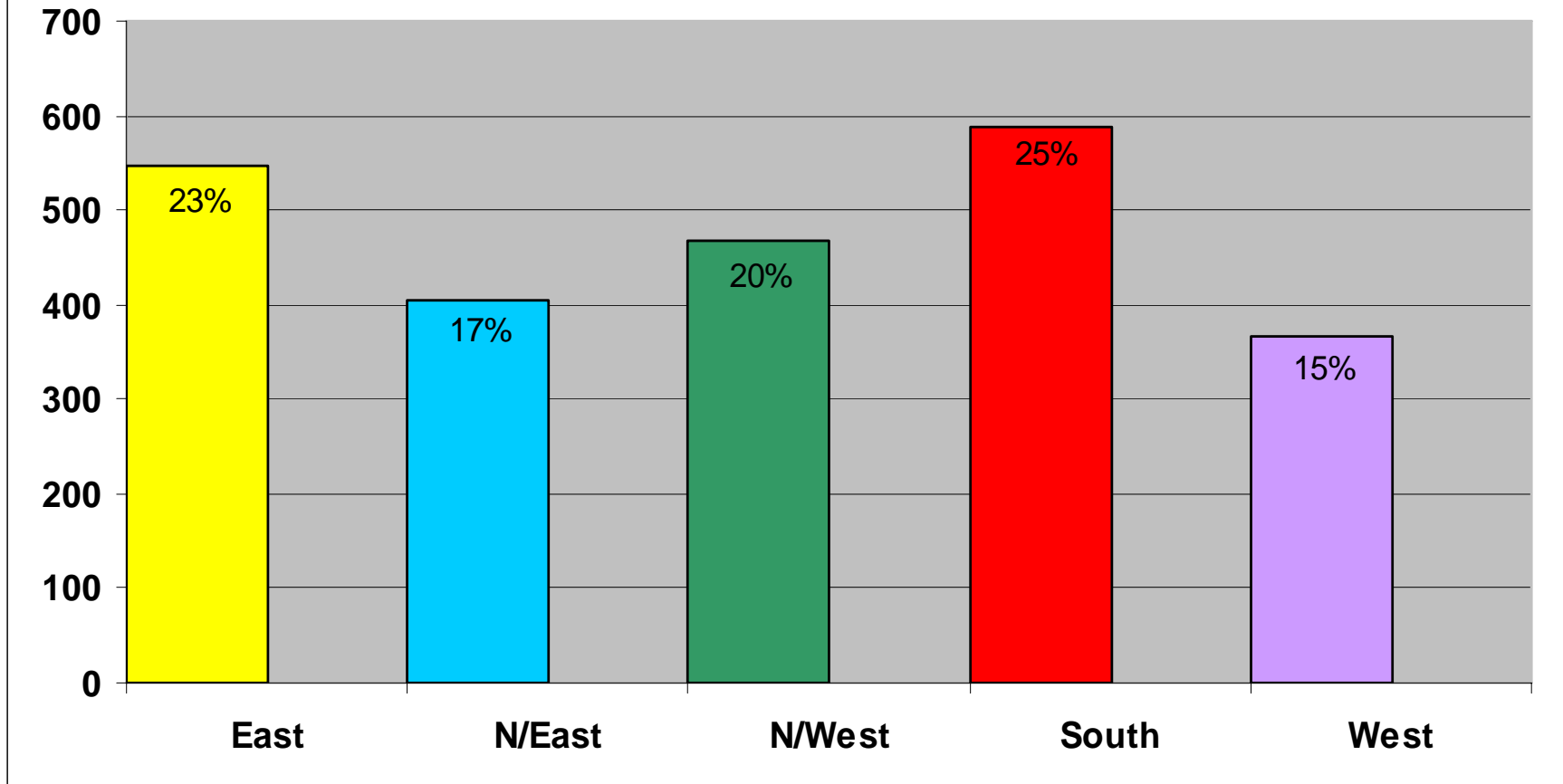
HH1 2008 Summary	Total Hrs
Sitting Services	2251
LA Group Homes	3267
LA Comm Support	18376
Independent Sector (Trad HC)	9502
Ind PLD (Group Living)	9672
TOTAL	43068

Number of households receiving H/C in HH1 week	4018
-----------------------------------------------------------	-------------

***excls nos away on hols etc*

actual will be higher

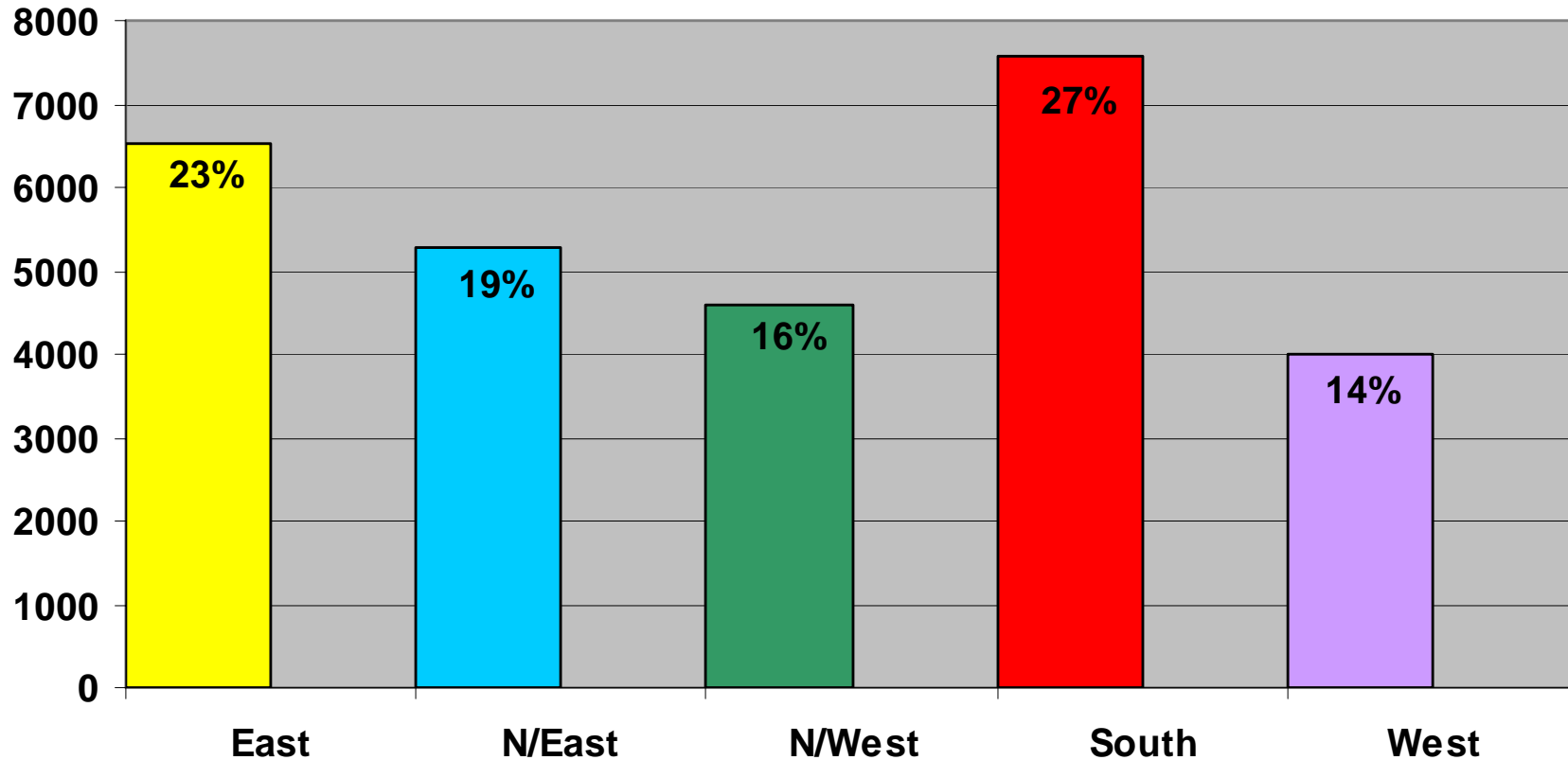
2,376 New Care Packages July 08 - June 09



2,376 NEW care packages + 1,286 INCREASED care packages – 3,662 Total

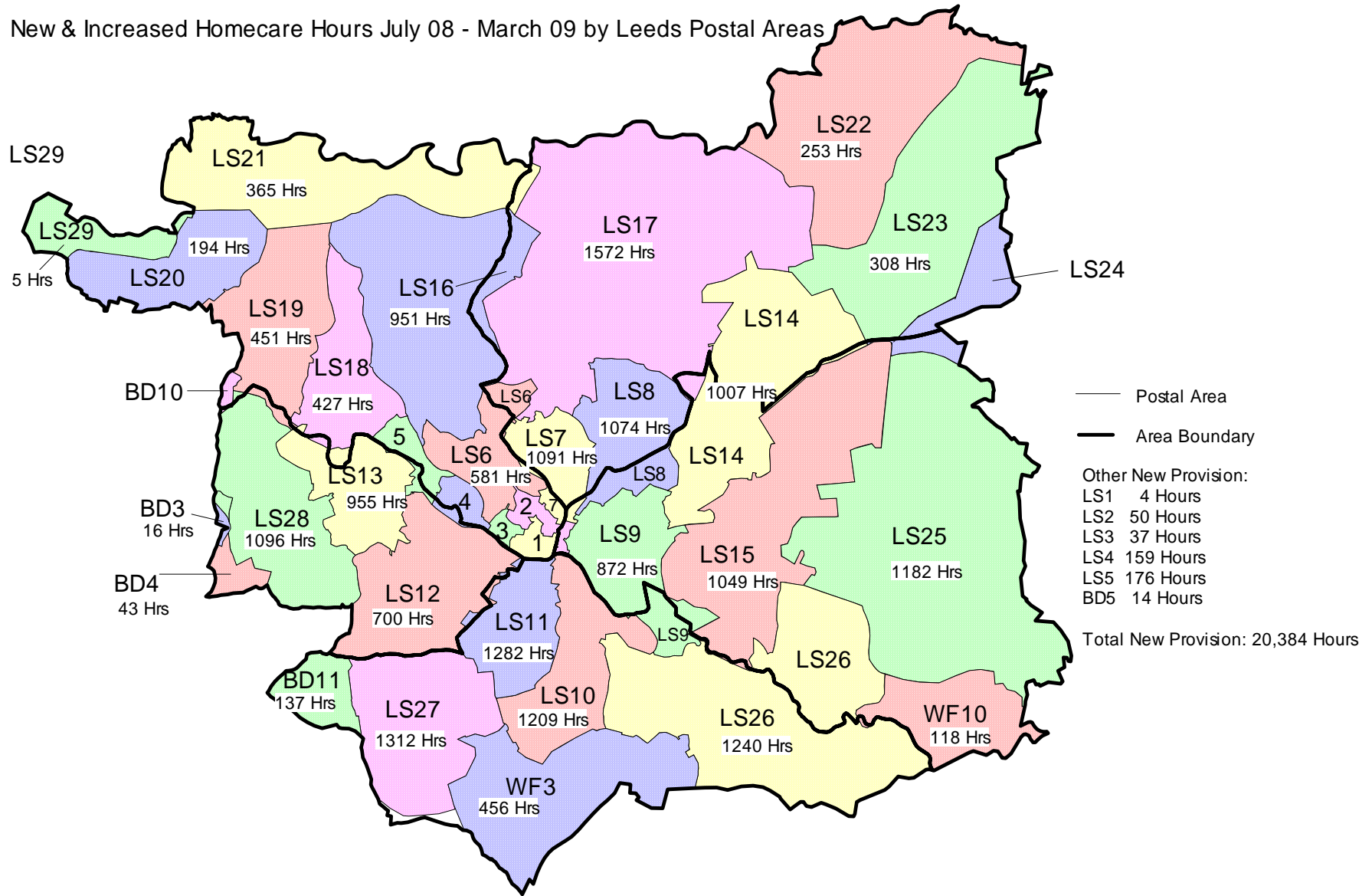
New & Increased Hours

27,937 new hours from July 08 - June 09



21,809 NEW hours + 6,128 INCREASED hours = Total of 27,937 new hours

New & Increased Homecare Hours July 08 - March 09 by Leeds Postal Areas





What else do we need to know?