

LEEDS SUSTAINABLE EDUCATION TRAVEL STRATEGY

Summary Leaflet



What is the Sustainable Education Travel Strategy

Leeds City Council’s Sustainable Education Travel Strategy aims to help more children and young people travel to school and further education establishments sustainably, by making walking, cycling and the use of public transport more accessible and attractive. The overall aim of the strategy is to:-

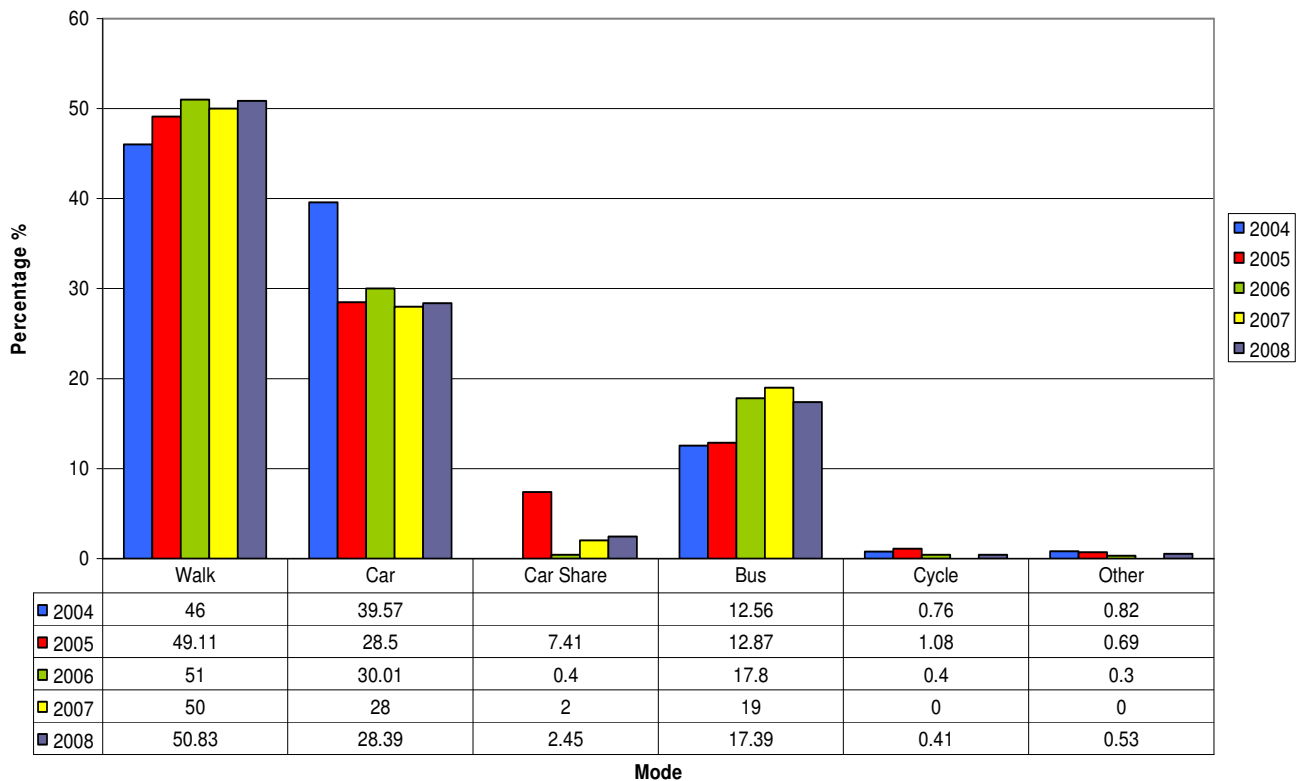
Create a way in which children and young people travel to education and training establishments sustainably.

Why do we want our children and young people to travel sustainably?

Travelling to school by car raises issues of air quality and road safety and the long term decline in children’s levels of physical exercise. More importantly car dependency has a negative impact on health and the independence of young people and their future views of travel behaviour in later life.

In 2007, 28% of pupils who live in Leeds travelled to school by car

Leeds School Modal Split 2004-2008



Who is the strategy aimed at

The strategy is aimed at all school aged pupils in Leeds in Children and Young Peoples learning establishments and schools, plus students who attend further education establishments.

How do we know what needs to be done?

Leeds City Council have been asking pupils and students how they currently travel to school or college and how they would like to travel, in addition we have asked pupils what the barriers are to travelling sustainably. We are also reviewing journeys to schools and colleges to find out what needs to be done and identify areas that could be improved.

Objectives

In order to create an environment in which children and young people choose to travel to schools and colleges sustainably. We have set out 7 objectives and key actions that will help meet these objectives.

Objective 1

Develop, implement and monitor travel plans in all schools and FE establishments.

Key Action: Help all schools and FE colleges in the preparation and implementation of travel plans

Objective 2

Develop innovative projects, initiatives and campaigns to promote and support sustainable travel within schools and FE establishments.

Key Action: To develop a Leeds Travel Plan Reward Scheme

Objective 3

Work in partnership with stakeholders both within and external to the Council to maximise the effectiveness of travel plan measures and initiatives as an integrated part of the Local Transport Plan and health and education strategies.

Key Action: To ensure schools develop, monitor and evaluate School Travel Plans before they can achieve advanced Healthy Schools Standard.

Objective 4

Develop measures and improvements which improve the safety and appeal of sustainable school travel choices.

Key Action: To compile an in-depth audit of all school infrastructure to identify barriers for sustainable travel to school

Objective 5

Working in partnership with Metro and public transport operators when planning sustainable travel

Key Action:- Ensure schools with School Travel Plans sign up to SAFEMark initiative

Objective 6

Influence and inform the design and development of new build and extensions to schools and FE establishments with regard to safe and sustainable travel.

Key Action:- Ensure the ability to promote sustainable transport is incorporated into the building design, e.g. cycle provision

Objective 7

Work with regional partners to develop resources, organise training and share best

Key Action:- Establish a Sustainable Education Travel Steering Group and develop workshops to promote sustainable travel with key partners

How do we know if the strategy is successful?

The strategy will be monitored and evaluated by a The School Travel Steering Group set up specifically to address the issues raised by children and young people of Leeds District. The strategy will be monitored and updated annually.

For further information please contact;

Sue Walker
Sustainable Education Travel Coordinator
Transport Policy
The Leonardo Building
2 Rossington Street
LEEDS
LS2 8HD

Telephone: 0113 247 5762
e-mail: susan.e.walker@leeds.gov.uk